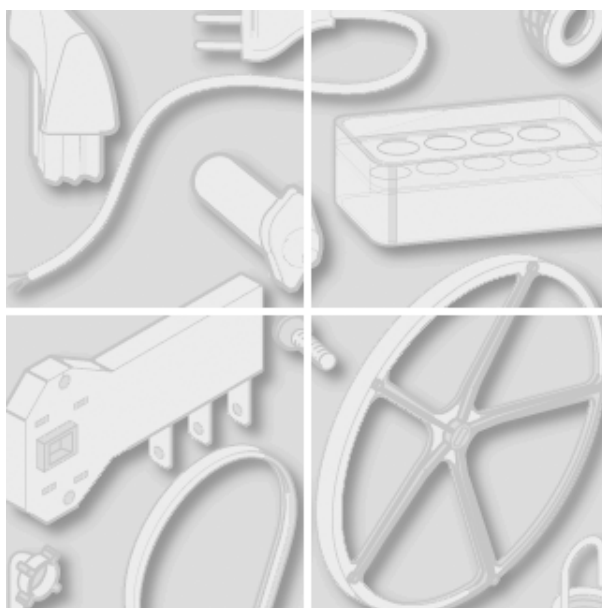


Indesit Company



Model type:
AI858CTX

Commercial code:
00119

General notes

Technical Documentation guidelines

You can find herewith some generic information to simplify consulting of technical documentation:

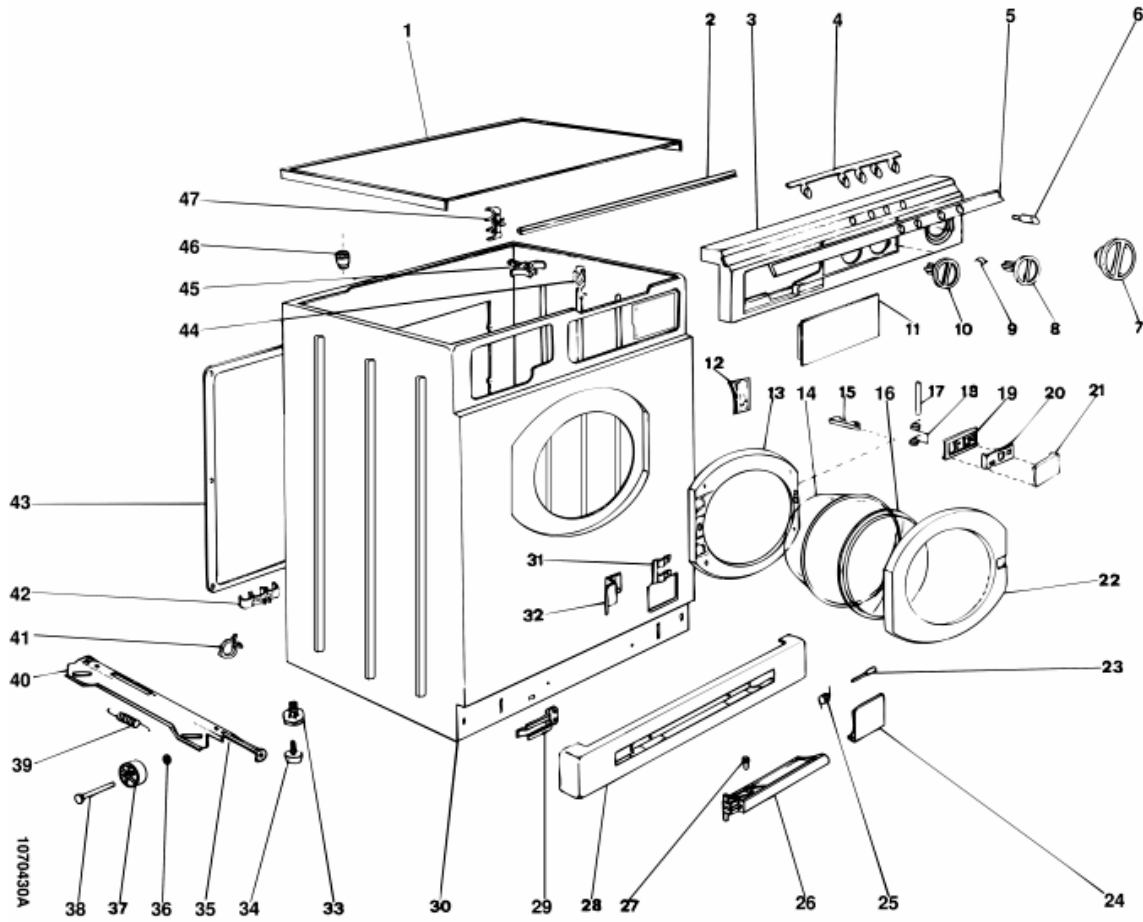
1. Models of same range share the same exploded views, which report the richest set of spare parts: generally, a model does not necessarily have a related spare part for each particular shown on exploded views.
2. Some spare parts can not be represented directly on the exploded views (instruction booklets, specific kit, etc...). You can find those codes in the spare parts list with the same reference of particular where spares are installed or with references 099, 999. Instruction booklets, once managed, appear with 000 reference.
3. On the higher right site of each exploded view there is a serial number which indicates the beginning of the production of certain range: some models might have more than an exploded view for a given category, each distinguished by a different serial no. and linked to another spare parts list, In this case, serial no. is required to supply the right spare part code. Exploded view to be considered is the one with a more recent serial no. but previous than the one of the model that needs assistance.
4. Exploded views might require further updates even after publishing. Addition of new spares will go on following the already existing numeration references. Revision number of an exploded view is shown into last four digits of serial number into upper right hand corner.
5. The spare parts list associated to an exploded view shows related codes of spares managed for a certain model; for each spare part other informations are available:

REF: reference no of spare into a table; SUBSTITUTE: list of spare(s) which can replace a code but that keeps same functional characteristics

INDUSTRIAL CODE: list of variables of a model (shown into model label) where such spare is used; NOTICE: code of information(s) to refer to complete technical intervention, track for changes or to find correct spare part code.
6. Some notices, into a same section are generic therefore cannot be directly linked to a spare part. In order to assist a model in the best way as possible, it is helpful to pay attention to all notices and constantly verify documentation updates
7. Technical documentation cover shows model name and its commercial codes

1070430a

Exploded views



1070430A

Matr. 00216.0001

1070430a

Spare parts list

Ref.	Code	С сер.№	По	Substitute	Description	Notice	Industrial
000	C00032178				user instructions booklet		
001	C00031128				worktop - white 27		
003	C00032078				панель управления b26		
004	C00031129				пластинка для центр. молдинга		
005	C00032180				dashboard moulding		
006	C00030352				кнопка вкл/выкл b27		
007	C00032052				ручка таймера b26		
007	C00033091			1 x C00032052	timer knob white 26		
008	C00031079			1 x C00040148	temperatur knob white 26		
009	C00002555				пластинка ручки		
010	C00032169				рукоятка времени сушки b26		
011	C00031075				ручка ящичка белая 26		
012	C00019662				крышка рамки		
013	C00019672				внутренняя рамка дверцы		
014	C00021880				стекло смотр. окна x cd e wd		
015	C00019705			1 x C00021300	striker - door catch		
016	C00021894				стекл.экран смотр.окна		
017	C00003044				штырь рукоятки		
018	C00019704				пружина ручки		
019	C00019690				черная рукоятка смотр. окна	0107421	
021	C00022487				кожух ручки люка b.27		
021	C00031856				комплект ручки люка, белый27		
022	C00029059				door inner/outer assy - white 27		
023	C00031437				штырь крышки фильтра		
024	C00019673				крышка фильтра белая binda 26		
025	C00031438				пружина дверцы фильтра		
028	C00030344				plinth white		
030	C00032076				cabinet - filter door - white 27	0107468 0107552	
030	C00044623				timer support	0107468	
031	C00019668				пластинка петли		
032	C00020024				петля люка (30912)	0107450	
032	C00043019			1 x C00074149	taptite screw m4x6testfr		
033	C00033652				опора ножки		
034	C00027096			1 x C00053986	ножка в сборе (70907)		

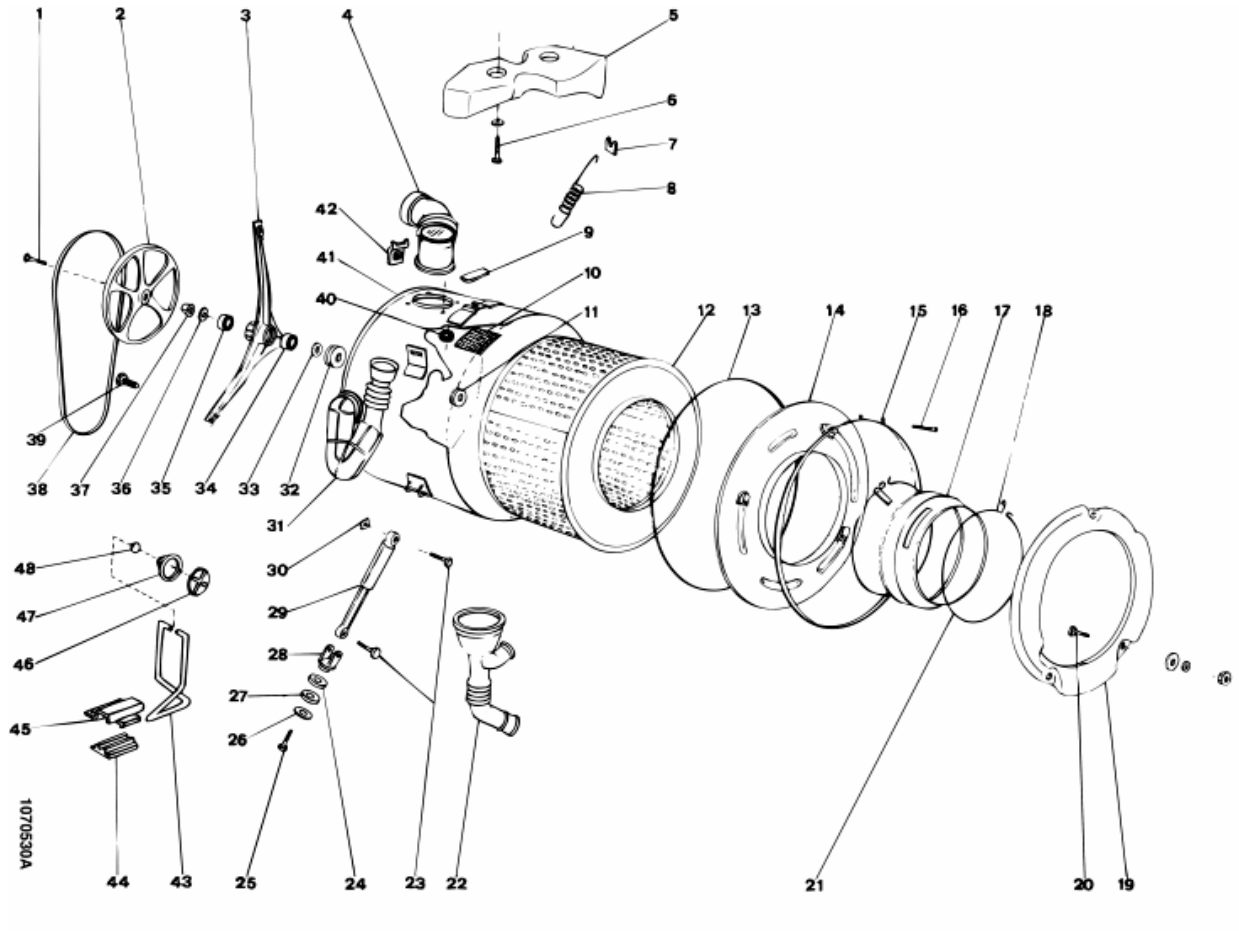
1070430a

Spare parts list

Ref.	Code	С сер.№	По	Substitute	Description	Notice	Industrial
041	C00020664				зажим сливного шланга		
043	C00019664				rear cover - white		
044	C00024552				держатель труб		
045	C00023847				wiring clamp 11/18		
046	C00015835				worktop retainer		
047	C00019685				держатель сливного шланга		

1070530a

Exploded views



1070530a

Spare parts list

Ref.	Code	С сер.№	По	Substitute	Description	Notice	Industrial
001	C00019802				винт крепления ведомого шкива		
002	C00027209				шкив ведомый 800 об		
003	C00029085			1 x C00019757 1 x C00027215 2 x C00038865	крестовина 800 оборотов		
004	C00027490				hose tub-connection steam		
005	C00030337				upper counterweight		
006	C00015492				винт m8x80 t.t.l.		
007	C00019675				кольцо зажимное пружины		
008	C00021911			2 x C00029165	tank spring red 129 mm		
009	C00025208				прокладка губчатая		
010	C00027453				filter steam		
011	C00026307				кольц.уплотнение v35		
012	C00029088				drum 800 rpm (80526)		
013	C00020941				прокладка нерж.крышки ванны		
014	C00031029				крышка нерж.ванны		
015	C00003018				clamping band tank front		
016	C00023840				винт m6 x 80 для главного		
017	C00027457				прокладка люка		
018	C00008665			1 x C00033041	bellows clamp - case front		
018	C00032708				plastic insert nut - case front	0107387	
019	C00030335				kit front counterweight		
020	C00030444				screw tfl m8 x 35		
021	C00019711			1 x C00036780	bellows clamp (over centre)		
022	C00027491				сильфон слива d.70 mm.		
022	C00027990				зажим 78-85		
023	C00030446				винт m10 x 45 zntr		
024	C00030339				опора верхняя амортизатора		
025	C00030445				винт m8 x 25 zntr		
026	C00030341				пружинная шайба 10,5 x 17,5 x		
027	C00030392			1 x C00030339	rubber cup washer		
028	C00030338				опора амортизатора		
029	C00030340				амортизатор 80 n		
030	C00030447				nut m10		
031	C00027492				сильфон загрузки		

1070530a

Spare parts list

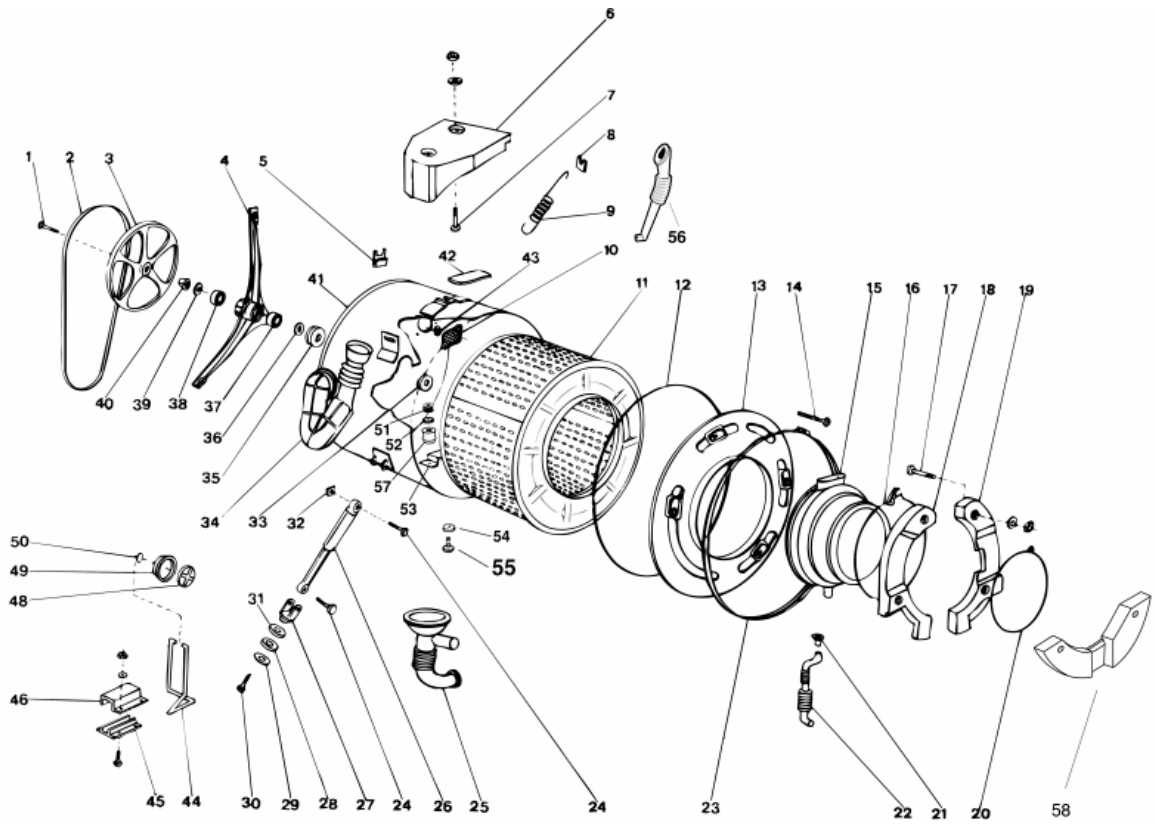
Ref.	Code	С сер.№	По	Substitute	Description	Notice	Industrial
032	C00029087				прокладка крестовины 800/1000		
033	C00026301				диск крестовины 1000 об х v-		
034	C00013563				подшипник 25 x52 x 15 6205 -		
035	C00002591				подшипник 20x47x14 6204 skf		
037	C00022335				втулка шкива 800 об		
038	C00027206				ремень poly-v 1270 mm.		
039	C00018018			1 x C00038358	bolt m8 x 18 te (dry loc)		
040	C00019716				seal'for element clamp'		
041	C00032179				inox tub outer		
042	C00019667				пластинка крестовины		

1070540

Exploded views

Matr. 00726.0003

1070540



1070540

Spare parts list

Ref.	Code	С сер.№	По	Substitute	Description	Notice	Industrial
001	C00018018			1 x C00038358	bolt m8 x 18 te (dry loc)		
001	C00019802				винт крепления ведомого шкива	0107466	
001	C00039670				шайба для шкива 1000 g (21106)		
001	C00039671				винт крепления ведомого		
002	C00027206				ремень poly-v 1270 mm.		
003	C00027209				шкив ведомый 800 об	0107466	
003	C00039669				ведомый шкив 1000 g		
004	C00027215				bearing spider 800 rpm aluminium	0107410	
004	C00033020				крестовина барабана 800 обор.	0107466	
004	C00039668				крестовина с уплотнит.		
005	C00019667				пластинка крестовины		
006	C00032867				противовес верхний		
007	C00019804			1 x C00038865	screw ttl m8x50		
008	C00019675				кольцо зажимное пружины		
009	C00021911			2 x C00029165	tank spring red 129 mm		
010	C00032849				фильтр		
011	C00029088				drum 800 rpm (80526)	0107410	
011	C00033024			1 x C00036389	drum star wheel sealing rings		
011	C00034397				комплект крестовины барабана		
011	C00040870				барабан 1000 оборотов с тягами		
011	C00043802				крестовина (компл-т) барабана		
012	C00020941				прокладка нерж.крышки ванны		
013	C00033090				нерж.крышка ванны 4 скобы		
014	C00023840				винт m6 x 80 для главного		
015	C00032850				прокладка смотрового окна	0107458	
016	C00019711			1 x C00036780	bellows clamp (over centre)		
016	C00036780				кольцо крепежное заднее geaz		
017	C00018234				screw m8x40 ttp		
018	C00032866			1 x C00045236	front counterweight left		
019	C00032865			1 x C00045236	front counterweight right		
020	C00008665			1 x C00033041	bellows clamp - case front		
020	C00032708				plastic insert nut - case front		
020	C00033041				зажим передний 856 mm		
023	C00003018				clamping band tank front		
024	C00030446				винт m10 x 45 zntr		

1070540

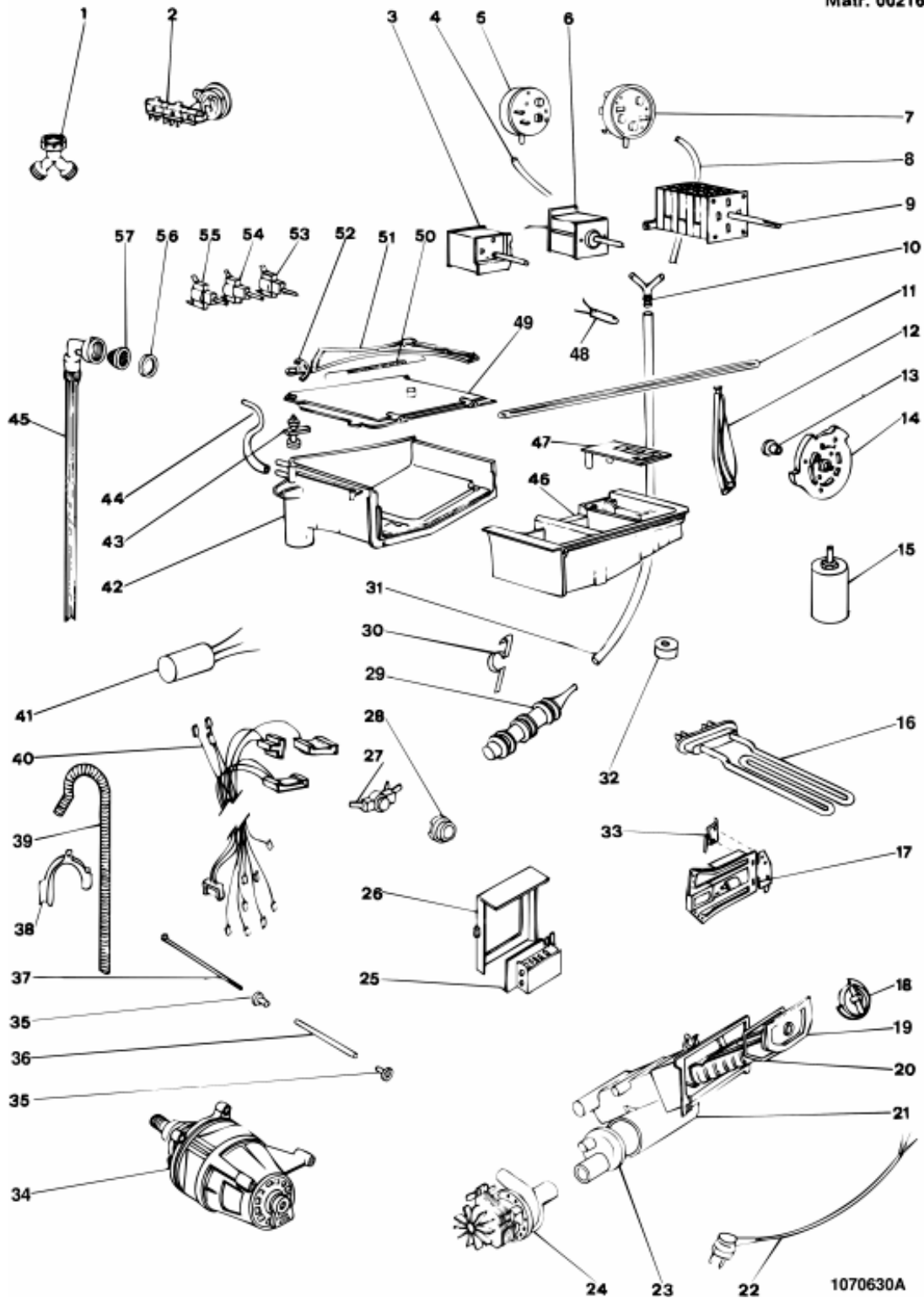
Spare parts list

Ref.	Code	С сер.№	По	Substitute	Description	Notice	Industrial
025	C00027491				сильфон слива d.70 mm.		
025	C00027990				зажим 78-85		
026	C00030340				амортизатор 80 n		
027	C00030338				опора амортизатора		
028	C00030392			1 x C00030339	rubber cup washer		
029	C00030341				пружинная шайба 10,5 x 17,5 x		
030	C00030445				винт m8 x 25 zntr		
031	C00030339				опора верхняя амортизатора		
032	C00030447				nut m10		
033	C00026307				кольц.уплотнение v35	0107410	
033	C00039667				уплотнительное кольцо (21106)		
034	C00027492				сильфон загрузки		
035	C00029087				прокладка крестовины 800/1000	0107410	
035	C00033025				прокладка крестовина с		
036	C00026301				диск крестовины 1000 об x v-	0107410	
036	C00033019				уплотнительное кольцо 800 об.	0107466	
037	C00013563				подшипник 25 x52 x 15 6205 -		
038	C00002591				подшипник 20x47x14 6204 skf		
040	C00022335				втулка шкива 800 об		
041	C00033092				нерж.ванна 80		
042	C00025208				прокладка губчатая		
043	C00019716				seal'for element clamp'		
051	C00037135				гайка самоблокирующаяся m4		
052	C00037142			1 x C00037132	washer 4x12x1 stainless		
053	C00037083			1 x C00037177	heater bracket		
054	C00037133			1 x C00037132	seal		
055	C00037132				винт + шайба m4x12 tmt из	n1040300	
057	C00058523				комплект направл. сопротивл.		

1070630a

Exploded views

Matr. 00216.0001



1070630a

Spare parts list

Ref.	Code	С сер.№	По	Substitute	Description	Notice	Industrial
002	C00029204				terminal block box elettrogibi		
003	C00032173				таймер		
004	C00032176				hose prssure switch hose 75 mm		
005	C00032079				реле давления 1-уровн. 115/92		
006	C00019650				регулируемый термостат		
007	C00032080				реле давления 2 ур.		
008	C00032172			1 x C00030387	pressure switch hose 135 mm		
009	C00032175				таймер elbi 1388/2		
010	C00021774				тройник трубки реле давления		
011	C00031068				тяга дозатора моющих средств		
012	C00023848				элемент ведомый кулачка		
013	C00031062				bush for timer cam elbi red		
014	C00031495				кулачок распределителя elbi		
016	C00019973				сопротивление 1950 w.		
017	C00030502			1 x C00046180	thermal interlock + microswitch		
017	C00031452				microswitch holder texas		
018	C00027473				ручка фильтра		
019	C00027470				фильтр сливного насоса		
020	C00027460				прокладка фильтра серая		
021	C00029093				filter body (with pin)		
022	C00003103			1 x C00022357	supply cable		
023	C00027471				соединитель между насосом и		
024	C00027882				самоочищающийся насос 220		
025	C00032171				модуль		
026	C00021684				bracket for module		
027	C00019753				термостат 2tt 40шпа 60шпс		
028	C00014917				прокладка термостата		
029	C00027467				воздушный фильтр-ловушка		
030	C00020025				air trap clip		
031	C00030388			1 x C00041785	трубка реле давления 450mm		
032	C00019755				устройство противоударное		
033	C00032177			1 x C00046180	microswitch for thermal lock		
034	C00025295			1 x C00031602	brush for commutator motor		
034	C00027208			1 x C00046524	motor	n1040258	
034	C00028594				тахогенератор для		

1070630a

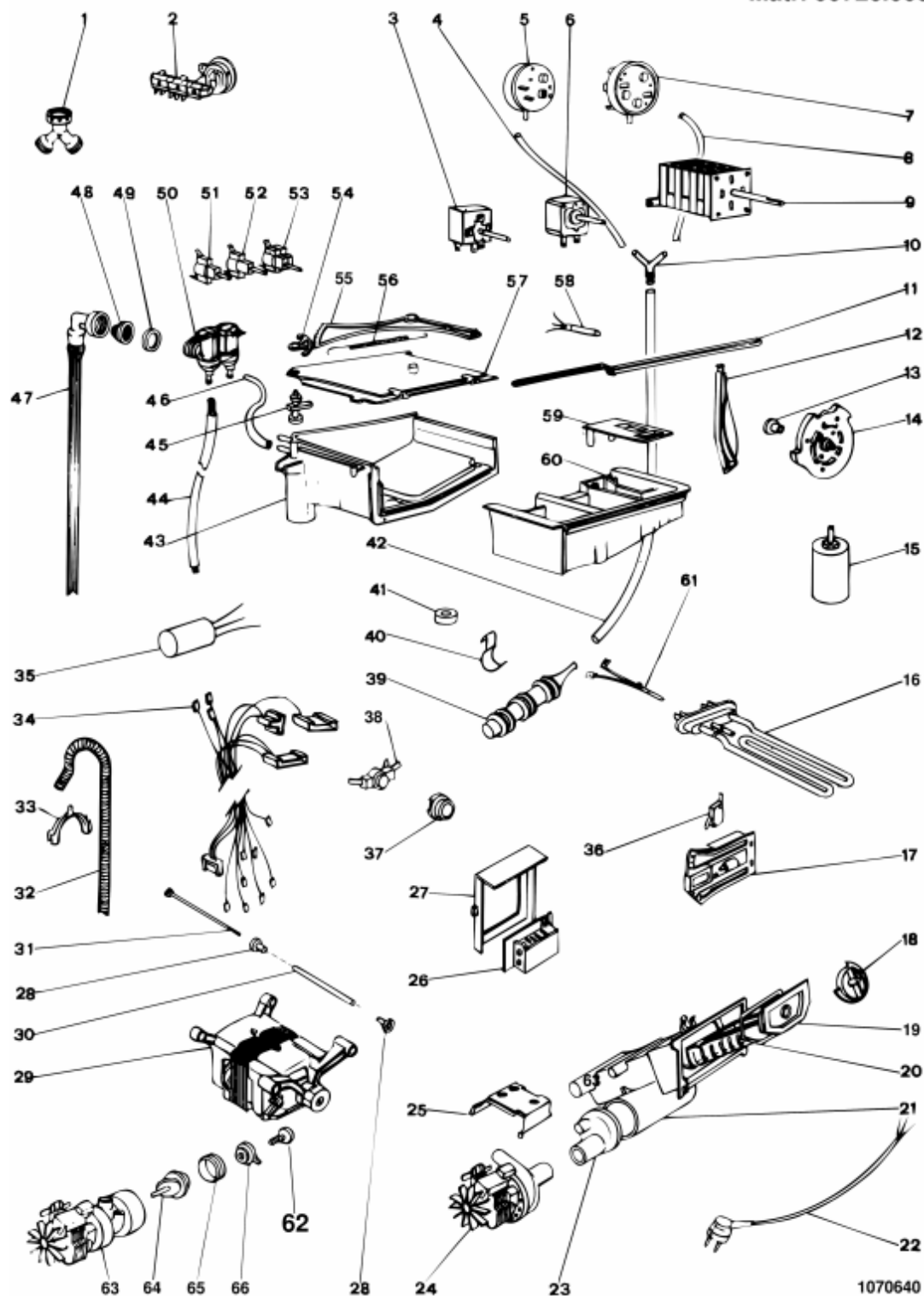
Spare parts list

Ref.	Code	С сер.№	По	Substitute	Description	Notice	Industrial
035	C00019682				втулка держателя двигателя, 20		
036	C00019965				распорка двигателя		
037	C00019964				винт двигателя m6 x 212te		
038	C00019902				опора спиральн. сливн. шланга		
039	C00027466				спир.сливной шланг с коленом		
040	C00027450				harness motor blower		
040	C00032174				harness + timer elbi 1388/2		
041	C00008666			1 x C00026359	radio interference suppressor		
042	C00019733				hopper		
043	C00021662				dispenser cold water		
044	C00015498				шланг для горячей воды l=600		
045	C00003070				залив.шланг 1500 mm		
046	C00022678				емкость для моющего средства		
047	C00019840				крышка ящичка для бобавок		
048	C00019749				лампочка сигнальная		
049	C00019726			1 x C00020878	hopper cover		
050	C00019708				пружина дозатора		
051	C00028568				шестерня промежуточная		
052	C00028569				шестерня промежуточная		
053	C00030358				зам.-разм. выключатель вкл-		
054	C00031061				выключатель nc		
055	C00030357				выключатель-переключатель		
056	C00005572				прокладка заливочного шланга		
057	C00005781				фильтр заливочного шланга		

1070640

Exploded views

Matr. 00726.0003



1070640

1070640

Spare parts list

Ref.	Code	С сер.№	По	Substitute	Description	Notice	Industrial
002	C00029204				terminal block box elettrogibi		
003	C00032173				таймер		
004	C00030387				шланг реле давления 150 mm		
005	C00032874			1 x C00085193	реле давления 1 ур.115/85 +		
006	C00033058				регулируемый термостат		
007	C00033047				реле давления 2 ур.		
009	C00033059				таймер eaton ec 4254.02		
010	C00021774				тройник трубки реле давления		
011	C00031068				тяга дозатора моющих средств		
012	C00023848				элемент ведомый кулачка		
013	C00031082				втулка стопорная кулачка,		
014	C00031495				кулачок распределителя elbi		
016	C00033055				сопротивл. с тепловым		
017	C00030502			1 x C00046180	thermal interlock + microswitch		
017	C00031452				microswitch holder texas		
018	C00027473				ручка фильтра		
019	C00027470				фильтр сливного насоса		
020	C00027460				прокладка фильтра серая		
021	C00030624				корпус фильтра wd		
022	C00003103			1 x C00022357	supply cable		
023	C00027471				соединитель между насосом и		
024	C00027882				самоочищающийся насос 220		
026	C00033040				аналоговый модуль a.s.+s.o.		
026	C00037199				предохранитель 5 a		
027	C00021684				bracket for module		
028	C00019682				втулка держателя двигателя, 20		
029	C00025295			1 x C00031602	brush for commutator motor		
029	C00027208			1 x C00046524	motor	n1040258	
029	C00028594				тахогенератор для		
029	C00028595				щетка коллект.		
029	C00035289			1 x C00043430	tacho for motor ice		
029	C00035290				щетка электродвигателя		
029	C00053045				двигатель тахиметр. ceset		
030	C00019965				распорка двигателя		
031	C00019964				винт двигателя m6 x 212te		

1070640

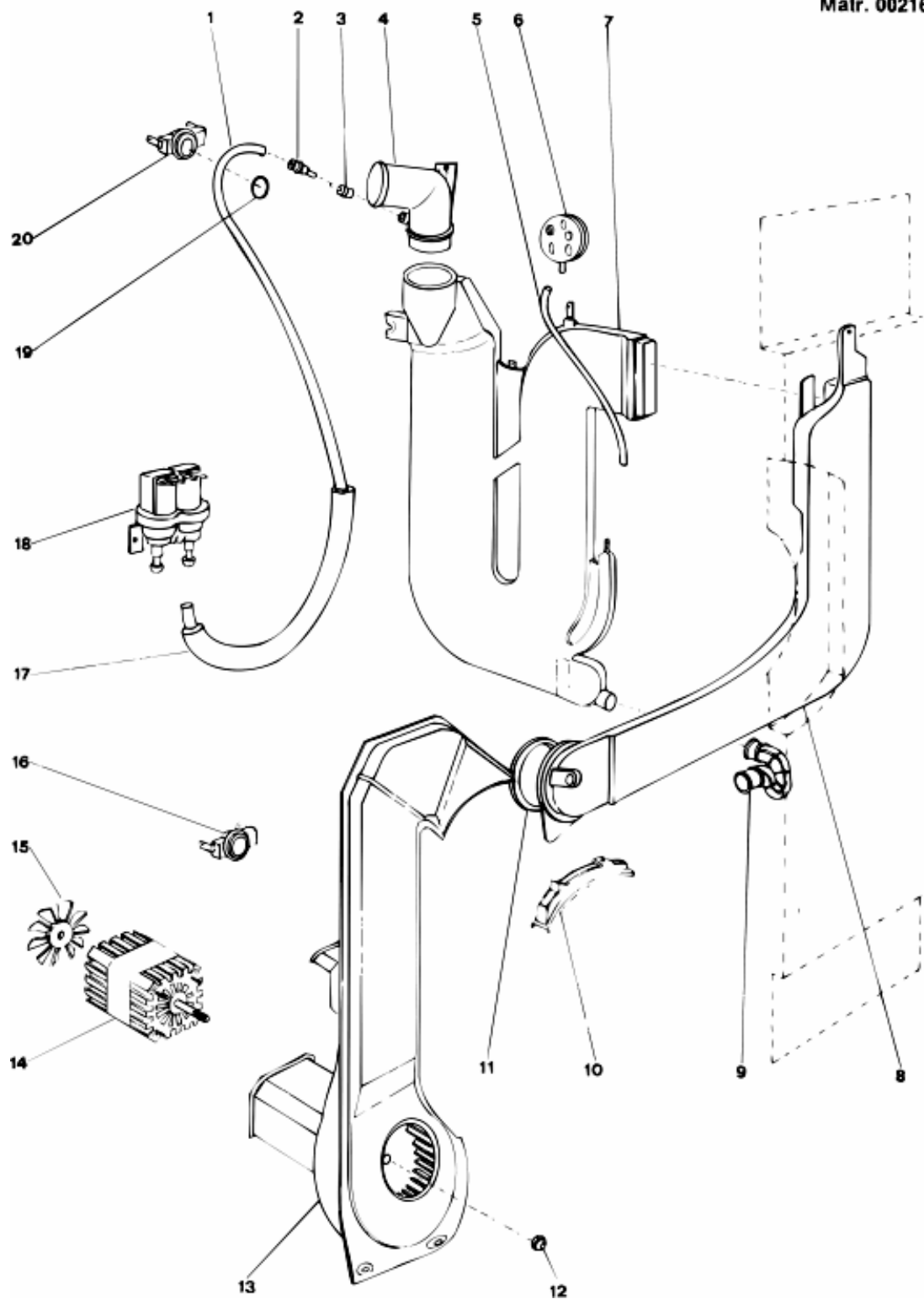
Spare parts list

Ref.	Code	С сер.№	По	Substitute	Description	Notice	Industrial
032	C00027466				спир.сливной шланг с коленом		
033	C00019902				опора спиральн. сливн. шланга		
034	C00033080				wiring + timer eaton ec 4254.02		
035	C00008666			1 x C00026359	radio interference suppressor		
037	C00014917				прокладка термостата		
038	C00019753				термостат 2tt 40шпа 60шпс		
039	C00027467				воздушный фильтр-ловушка		
040	C00020025				air trap clip		
041	C00019755				устройство противоударное		
042	C00030388			1 x C00041785	трубка реле давления 450mm		
043	C00019733				hopper	0107486	
043	C00046621				бункер + крышка		
044	C00033078				шланг электр. клапана		
045	C00021662				dispenser cold water		
046	C00015498				шланг для горячей воды l=600		
047	C00003070				залив.шланг 1500 mm		
048	C00005781				фильтр заливочного шланга		
049	C00005572				прокладка заливочного шланга		
050	C00021864				двойной электроклапан 10lt.		
051	C00030357				выключатель-переключатель		
052	C00031061				выключатель пс		
053	C00030358				зам.-разм. выключатель вкл-		
054	C00028569				шестерня промежуточная		
055	C00028568				шестерня промежуточная		
056	C00019708				пружина дозатора		
057	C00019726			1 x C00020878	hopper cover	0107486	
057	C00047276				dispenser top		
058	C00019749				лампочка сигнальная		
059	C00019840				крышка ящичка для бобавок	0107486	
059	C00046424				additive cover (50410)		
060	C00022678				емкость для моющего средства	0107486	
060	C00046423				ящик моющего средства (50410)		

1070730a

Exploded views

Matr. 00216.0001



1070730a

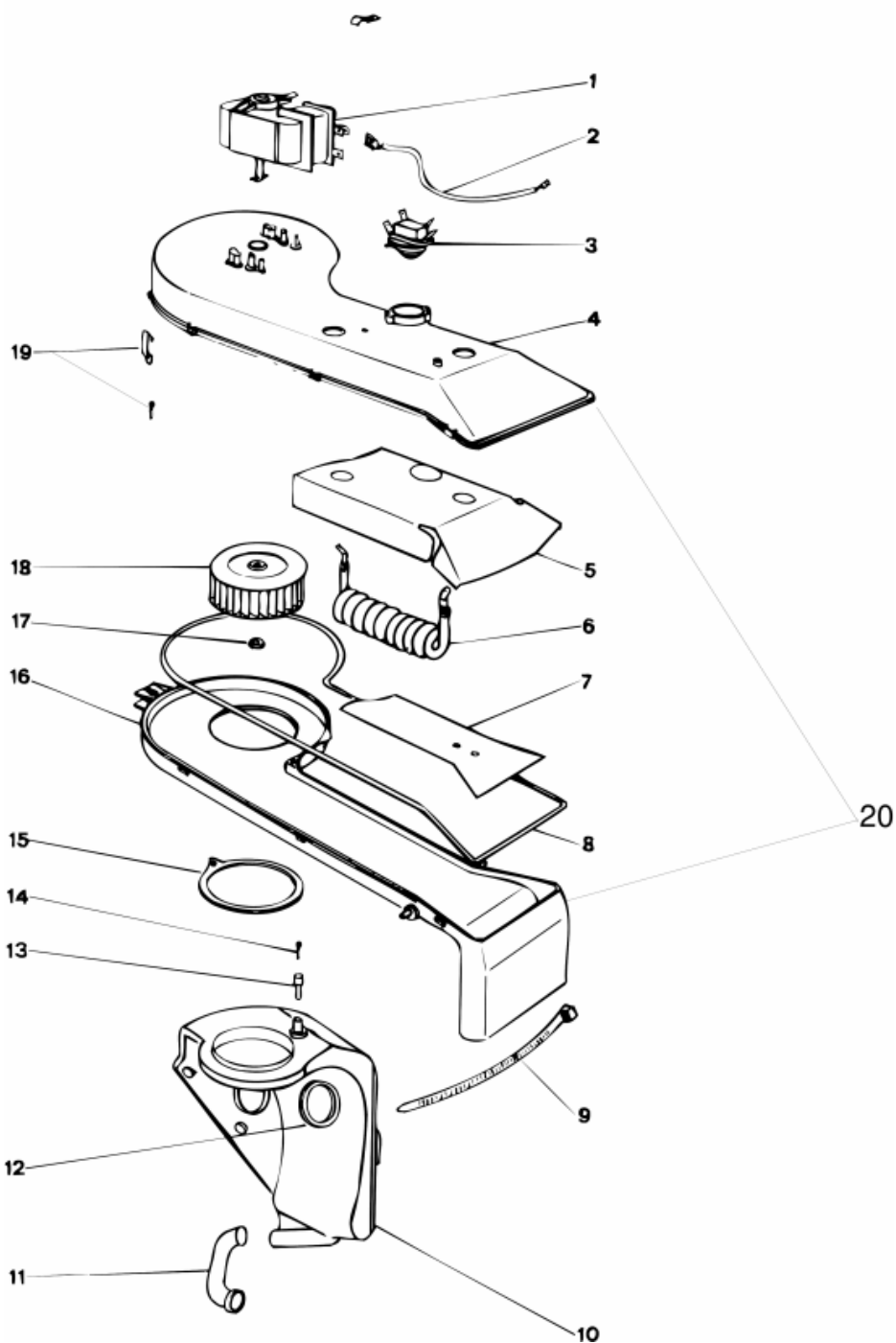
Spare parts list

Ref.	Code	C cep.№	По	Substitute	Description	Notice	Industrial
001	C00027462				hose electrovalve condenser1		
002	C00021881				regulator seat		
003	C00015461				regulator(0,5 lt./1) 'la'		
004	C00027476				connection steam condenser1		
005	C00023147				pressure switch hose 340mm.		
006	C00027493				pressure switch 65/30		
007	C00027468				steam condenser 1		
008	C00027469				steam condenser 2		
009	C00027461				hose condenser1 filter		
010	C00027455				flange air intake		
011	C00027458				steam condenser2 gasket		
012	C00027452				nut fixing blower		
013	C00027871				set blower 1250w. 220v.		
014	C00027870				motor blower 220v. 50hz.		
015	C00027477				gauge		
016	C00021877				safety thermostat 95øc nc		
018	C00021864				двойной электроклапан 10lt.		
019	C00020956				o ring		
020	C00025173				thermostat 2tt 48ønc 73ønc		

1070740

Exploded views

Matr. 00726.0002



1070740

Spare parts list

Ref.	Code	С сер.№	По	Substitute	Description	Notice	Industrial
001	C00032859				электродвиг.вентил.230 в 50 гц.		
002	C00032843				провод tepl.предохранителя		
003	C00032861				термостат 2tt nc 125/85		
004	C00032854			1 x C00054789	blower manifold top	0107393	
006	C00032858			1 x C00080765	сопротивление 1000 вт/230 в		
008	C00032847				прокладка нагнетателя		
009	C00033210				зажим fastex 350 mm x 7.8 mm		
010	C00032863				конденсатор пара		
011	C00032862				hose - condenser / tank		
012	C00032871				прокладка конденсатор/бак		
013	C00032845				гнездо регулятора		
014	C00032846				регулятор (0,45 lt./1)		
015	C00032844				прокладка конденсатора		
016	C00032855			1 x C00054789	blower manifold - lower	0107393 0107400	
017	C00032972				крепежная гайка крыльчатки		
018	C00021885				вентилятор x cd		
019	C00032856				пружина для сборки нагнетателя		

Notices

0107387: EXPANDER FOR FASTENING RING SEAL

As from serial no. 00412.001 the fixing hole of the front gasket ring has been changed from round to square on all the cabinets of the washer and tumble dryers.

A spacer cod. 032708 can now be fitted which stops the ring screw from scratching the cabinet and therefore prevents the formation of rust.

0107393: MODIFIED BLOWER ON TYPE 4 WASHERS

As from serial no. 00920.0001, the upper (code 032854) and bottom (032855) blower bodies have been modified on all type 4 washers in order to ensure a perfectly watertight seal to the blower unit

These now have three perforated tabs which permit the use of self-threading screws.

The new parts are indicated under the same codes as the premodification code (until stocks last), but are not interchangeable individually.

0107400: MODIFIED WAY WASHER-DRYER (T.4) BLOWER ATTACHED

As from serial no. 01026.0001, the bottom blower body code 032855 has been modified on the washer-dryers type 4.

The modification consists of the following: the two threaded eliminated and two threaded M8 holes have been made in the same area for housing an M8 X 18 ZNTR screw, currently available under code 018018.

The modified blower is interchangeable with the previous model and is therefore available under the same SAT code.

0107410: STAR WHEEL WITH RING SEALS

As from serial No. 10311.0001, spider wheels with seal ring have been used on all 800 rpm Washers and Tumble Dryers with exception of models

AR, AS and KLB in order to improve the water seal on the drum-spider wheel area.

The new parts used are as follows:

Code 034182 - 800 rmp str. 39 drum;

Code 033024 - 800 rpm str. 80 drum;

Code 033020 - Spider wheel with 800 rpm seal rings

Code 033019 - 800 rpm 52X35X12 seal ring;

Code 033026 - 1 kg packet of Ampligon TA grease;

Code 033025 - Spider wheel gasket for seal rings;

Code 002591 - Bearing 6204 - 2Z;

Code 013563 - Bearing 6205 - 2Z.

The user can use either the assembled spider wheel or the individual parts; in the case of the latter, remember that the surface of the bearing housing must not be warped or deformed in any way; if so, replace the entire spider wheel.

When you are fitting the seal ring on the spider wheel remember that the printing on the ring must be on the outside.

Moreover, in order to ensure a perfect seal of the ring, spread about 7 g. of Ampligon TA grease between the bearing and ring contact surface and in the hole at the centre of the ring.

0107417: CODIFICATION OF ELECTRONIC MODULE FUSE

Further to the requests received for the fuse used on the electronic models of the washing machine and tumble dryer, we have decided to include this as a spare part.

This part should be requested with code 037199; in the spare parts manual it will have the same reference number as the module.

0107421: MODIFIED DOOR HANDLE FOR WASHER AND WASHER-DRYER DOOR

For production reasons, the door handle has been modified on all washers and tumble dryers as from serial no. 11205.0001.

The new handle has a different structure and is made of hostaform instead of polycarbonate; the handle is white and not black.

This handle can not be used to replace the black handle (code 019690) because it does not fit the inner frame of the door.

Technical Servicing Departments must therefore use only the black handle because if necessary, it can be used to replace the white handle.

0107450: MODIFIED DOOR HINGE FOR MARGHERITA MULINELLO

The door hinge (code 020024) has been modified on all Washers and Washer-dryers in the Margherita and Mulinello ranges as from serial no. 40310.0001.

The holes of the hinge are now smaller and a hexagonal-head three-section M4x10 screw Taptite code 043019 is used to fix the appliance to the cabinet.

The modified hinge will have the same SAT code as the premodification hinge which will be supplied until stocks last.

When fixing the hinge, remember that you can either use the three-section screw or alternatively, by widening the holes with a bit you can use the metric M4x12 screw code 019846.

0107458: TRIANGULAR TAB FOR RING SEALS

That as from serial no. 40322.0001, a triangular tab has been added to the top of the door gasket on Margherita washing machines and tumbler driers in order to improve the positioning of laundry during the wash and spin cycles.
The new gaskets are fully interchangeable with the premodification gaskets and are supplied under the same SAT codes (washing machine code 019722 and tumble drier code 032850).

0107466: MECHANICAL PARTS FOR 1000 RPM ON MARGHERITA 800 RPM UNIT

As from serial no. 40831.0001 in order to improve the mechanics in the spider-wheel/drum shaft area, the following parts have been used on all 800 rpm washers-dryers in the Margherita models.

Code 040870 - Drum for O-ring 1000 rpm with holes;
Code 039668 - Spider wheel with O-ring 1000 rpm str. 39/80;
Code 043802 - Spider wheel drum with O-ring 1000 rpm str. 80;
Code 039669 - Driven pulley 1000 rpm str. 39/80;
Code 039671 - Screw M8 x 22;
Code 039670 - Washer 8.5 x 28 x 2.5;
Code 039667 - O-ring 1000 rpm;
Code 013563 - Bearing 6205-2Z
Code 002591 - Bearing 6204-2Z;

When making repairs either the spider wheel-tank unit or the single components may be used; in the case of the latter, remember to check that the surface of the bearing housing is not buckled; if so the entire spider wheel must be replaced.

When fitting the O-ring, ensure that the printing on the ring is external.

In addition, in order to ensure a perfect seal, apply approx. 7 g of

Ampligon TA grease on the surface between the bearing and the ring and in the hole at the centre of the ring.

The above mentioned parts are not individually interchangeable with the premodification parts.

0107468: RIVETED INSTEAD OF WELDED TIMER SUPPORT PIECE

As from serial no. 40905.0001, on all the Washing Machines and Tumble Driers produced in the factory of Comunanza, with exception of the Mulinello range, a rivetted timer support (code 044623) is mounted instead of the welded timer support.

The cabinets without support will continue to have the same SAT codes as the premodification models.

When installing a new cabinet, the support of the cabinet that has been replaced may be reused or the support supplied as a spare part can be used.

0107486: NEW DISPENSER ASSEMBLY FOR AV-AI-LB-AS MODELS

As from serial no. 50522.0001 the hopper lid, hopper, detergent dispenser and additive lid were modified in order to improve

detergent filling on all washer and tumble dryers in the "Margherita AI-AV", "Snella", "Quadrifoglio LB" range with exception of the special models manufactured for the

German and English markets:

The codes of the modified parts are as follows:

Code 047276 - DE hopper lid;

Code 046621 - Hopper;

Code 046423 - Detergent dispenser;

Code 046424 - Additive lid;

The new parts are not individually interchangeable with the premodification parts (that will continue to be supplied) but are interchangeable if used as a whole.

0107552: BACK CABINET MODIFICATION

Beginning from serial number 80825.0001 the terminal block, the back panel, the drain pipe and the back of the cabinet have been changed in the Washing Machines and Washer-Dryers in the Dialogic, AL and AB range.

The following part are affected by this modification:

Dialogic:

Code 049515 Back panel;

Code 051738 Drain pipe assembly;

Code 041163 Terminal block box.

AL / AB AL..C / AB..C Washing Machines and Washer-Dryers

Code 049515 Back panel;

Code 051738 Drain pipe assembly;

Code 041163 Terminal block box.

The modified cabinets retain the same SAT codes as the pre-modification ones. In order to guarantee interchangeability, they are handled complete with back panel and terminal block.

The modification is also extended to out-of-production cabinets that are handled as a spare part. Therefore, in case of modified cabinets, the back panel with code 049515 and the terminal block 041163 must be used.

Legend

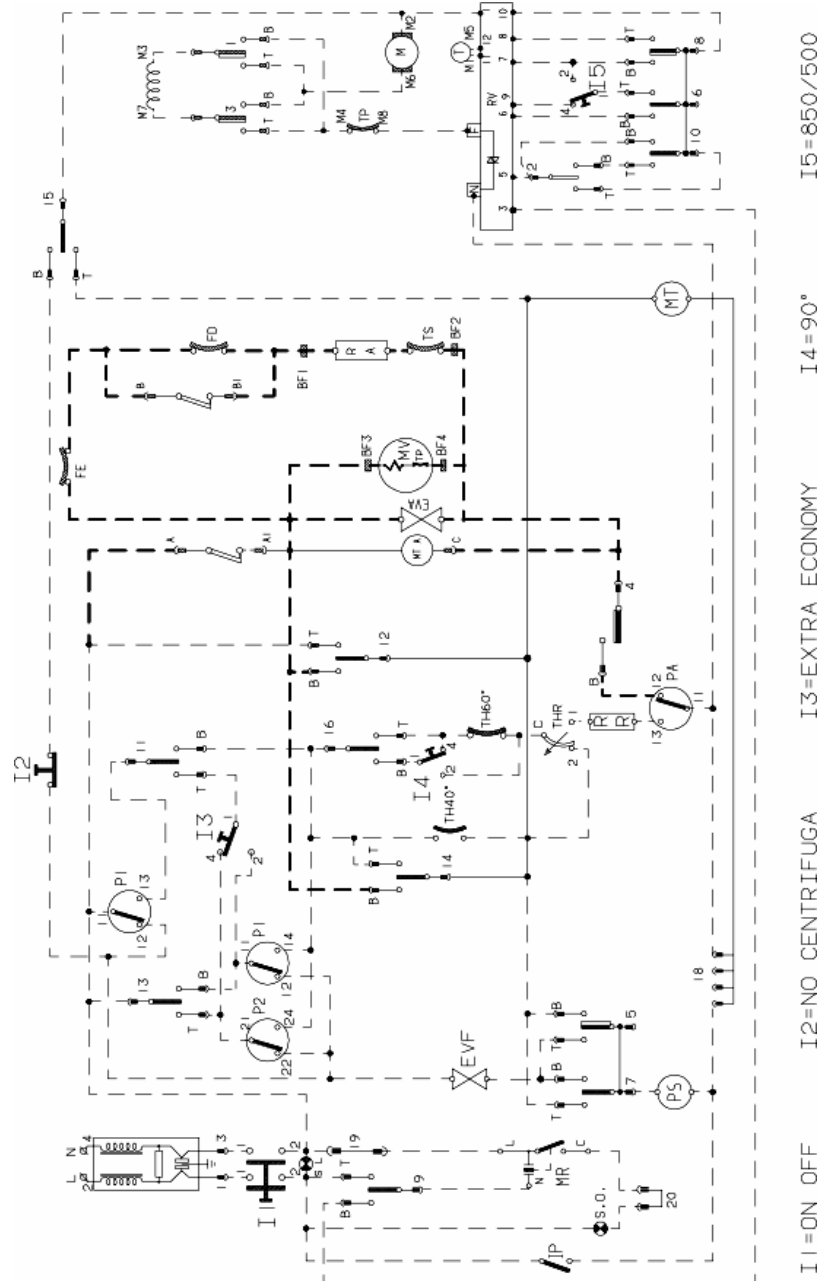
Legend: 107111a

B	Buzzer	N	Neutral or Terminal Board
BF	Terminal board contact, motor fan and dryer	NC	Spin cycle exclusion
BP	Buzzer	P	Pressure switch
C	Condensator	P1	1st level pressure cut-off switch
CA	Condensator	P2	2nd level pressure cut-off switch
DV	Switching device	PA	High speed potentiometer
EF/CL	Electro-Valve Cold Water / Bleach	PB	Low speed potentiometer
EF/L	Electro-Valve Cold Water / Wash	PL	Pure Wool
EF/P	Electro-Valve Cold Water / Prewash	PM	Motor Thermoprotector
ER	Exclude Heating Element	PR	Timer programmer
ET	Thermostat disactivation	PS	Drain pump
EV	Electrovalve	R	Heating element
EVA	Dryer electrovalve	RE	Relay
EVC	Hot water electrovalve	RR	Heating element
EVF	Elettrovalvola acqua fredda	RV	Speed regulator
EVL	Wash electrovalve	Ras/RA	Dryer heating element
EVP	Pre Wash electrovalve	S	LED
FA	Antijamming filter	SL	Line LED
FD	Delicate drying cycle thermostat	SO	Door LED
FE	Strong drying cycle thermostat	SR	Heating LED
FRT	Thermofusible Heating Element	ST	Temperature selector
I	Inverter	SV	Speed Selector for Spin
II...2...3..	Switches/switching devices	T	Timer contacts
IA	Switch On/Off	TA	Drying timer contacts
IC	Switch N.C. - 1/2 Load	TB	Low Temperature Thermostat
ID	Switch display	TC	Spider wheel earth
IE	Water Saving Device	TFL	Flange earth
IF	Switch - Spin Reduction	TG	Main earth
IP	Door switch	TH	Thermostat
IR	Line switch	TH1	1st temperature thermostat
IS	Water-stop	TH2	2nd temperature thermostat
L	Line or Lamp	TH3	3rd temperature thermostat
LB	Low Level	THF	Operating thermostat

LN	Normal Level	THR	Adjustable thermostat
LS	Pilot lamp	TM	Motor earth
M	Earth-symbol	TMB	Main cabinet earth
MC	Spin cycle motor	TMP	Motor thermal protector
MI	MOTOR WITH PULLEY	TMS	Thermostop
ML	Wash cycle motor	TP	Thermal protector
MO	Terminal Board	TPS	Drain pump earth
MP	Door dip-switch	TR	Heating element earth
MR	Thermal Lock	TS	Safety thermostat
MT	Timer motor	TT	Timer earthing connection
MV	Motor fan	TTH	Earthing Thermostat
MV -Ras	Dryer heating element	TV	Tank earth
Mzbn/MTA	zbn timer motor	ZBN	Timer

Electric schemes and links

Cod. 107111b



Legend

Legend: 107111b

B	Buzzer	N	Neutral or Terminal Board
BF	Terminal board contact, motor fan and dryer	NC	Spin cycle exclusion
BP	Buzzer	P	Pressure switch
C	Condensator	P1	1st level pressure cut-off switch
CA	Condensator	P2	2nd level pressure cut-off switch
DV	Switching device	PA	High speed potentiometer
EF/CL	Electro-Valve Cold Water / Bleach	PB	Low speed potentiometer
EF/L	Electro-Valve Cold Water / Wash	PL	Pure Wool
EF/P	Electro-Valve Cold Water / Prewash	PM	Motor Thermoprotector
ER	Exclude Heating Element	PR	Timer programmer
ET	Thermostat disactivation	PS	Drain pump
EV	Electrovalve	R	Heating element
EVA	Dryer electrovalve	RE	Relay
EVC	Hot water electrovalve	RR	Heating element
EVF	Elettrovalvola acqua fredda	RV	Speed regulator
EVL	Wash electrovalve	Ras/RA	Dryer heating element
EVP	Pre Wash electrovalve	S	LED
FA	Antijamming filter	SL	Line LED
FD	Delicate drying cycle thermostat	SO	Door LED
FE	Strong drying cycle thermostat	SR	Heating LED
FRT	Thermofusible Heating Element	ST	Temperature selector
I	Inverter	SV	Speed Selector for Spin
II...2...3..	Switches/switching devices	T	Timer contacts
IA	Switch On/Off	TA	Drying timer contacts
IC	Switch N.C. - 1/2 Load	TB	Low Temperature Thermostat
ID	Switch display	TC	Spider wheel earth
IE	Water Saving Device	TFL	Flange earth
IF	Switch - Spin Reduction	TG	Main earth
IP	Door switch	TH	Thermostat
IR	Line switch	TH1	1st temperature thermostat
IS	Water-stop	TH2	2nd temperature thermostat
L	Line or Lamp	TH3	3rd temperature thermostat
LB	Low Level	THF	Operating thermostat

LN	Normal Level	THR	Adjustable thermostat
LS	Pilot lamp	TM	Motor earth
M	Earth-symbol	TMB	Main cabinet earth
MC	Spin cycle motor	TMP	Motor thermal protector
MI	MOTOR WITH PULLEY	TMS	Thermostop
ML	Wash cycle motor	TP	Thermal protector
MO	Terminal Board	TPS	Drain pump earth
MP	Door dip-switch	TR	Heating element earth
MR	Thermal Lock	TS	Safety thermostat
MT	Timer motor	TT	Timer earthing connection
MV	Motor fan	TTH	Earthing Thermostat
MV -Ras	Dryer heating element	TV	Tank earth
Mzbn/MTA	zbn timer motor	ZBN	Timer

Legend

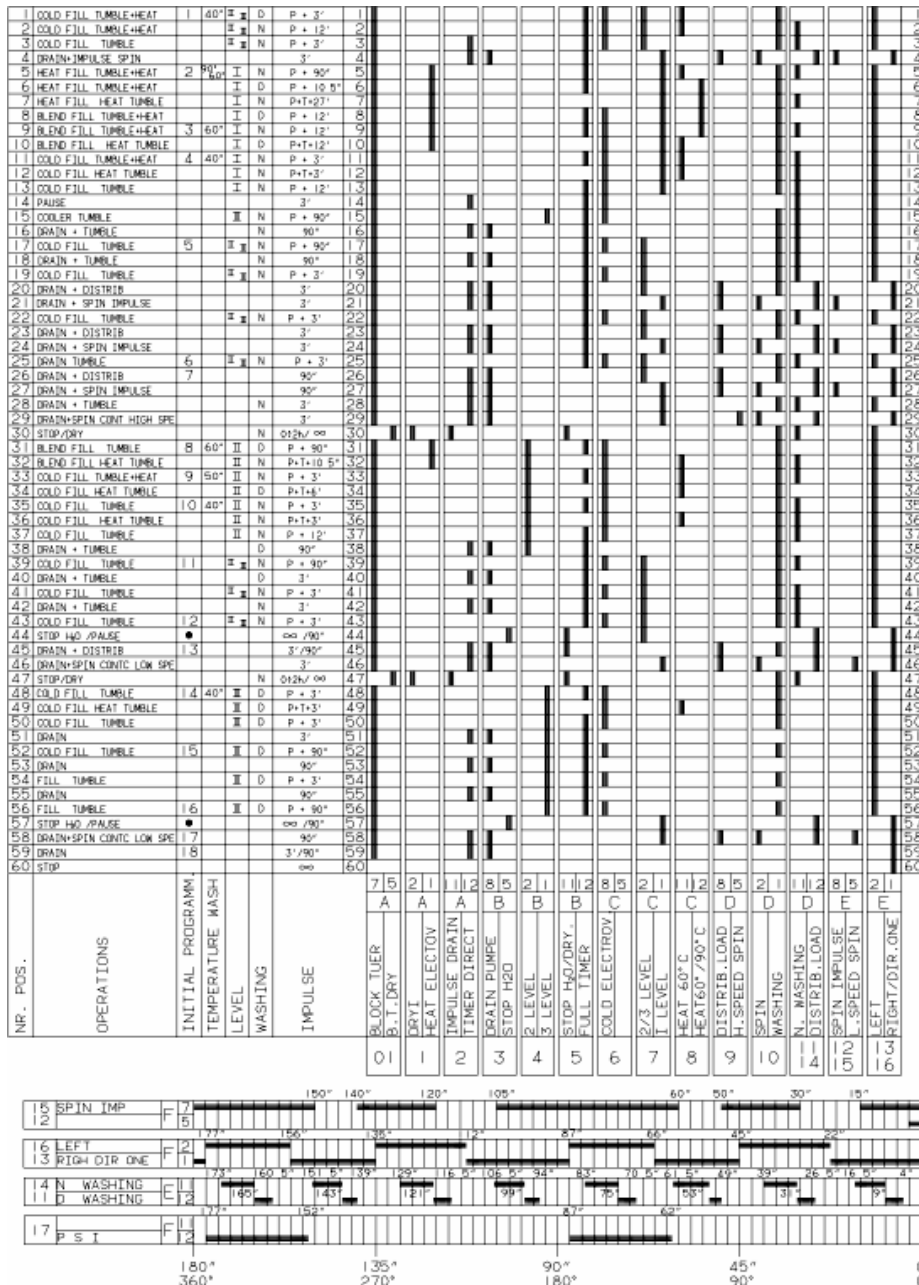
Legend: 107111c

B	Buzzer	N	Neutral or Terminal Board
BF	Terminal board contact, motor fan and dryer	NC	Spin cycle exclusion
BP	Buzzer	P	Pressure switch
C	Condensator	P1	1st level pressure cut-off switch
CA	Condensator	P2	2nd level pressure cut-off switch
DV	Switching device	PA	High speed potentiometer
EF/CL	Electro-Valve Cold Water / Bleach	PB	Low speed potentiometer
EF/L	Electro-Valve Cold Water / Wash	PL	Pure Wool
EF/P	Electro-Valve Cold Water / Prewash	PM	Motor Thermoprotector
ER	Exclude Heating Element	PR	Timer programmer
ET	Thermostat disactivation	PS	Drain pump
EV	Electrovalve	R	Heating element
EVA	Dryer electrovalve	RE	Relay
EVC	Hot water electrovalve	RR	Heating element
EVF	Elettrovalvola acqua fredda	RV	Speed regulator
EVL	Wash electrovalve	Ras/RA	Dryer heating element
EVP	Pre Wash electrovalve	S	LED
FA	Antijamming filter	SL	Line LED
FD	Delicate drying cycle thermostat	SO	Door LED
FE	Strong drying cycle thermostat	SR	Heating LED
FRT	Thermofusible Heating Element	ST	Temperature selector
I	Inverter	SV	Speed Selector for Spin
II...2...3..	Switches/switching devices	T	Timer contacts
IA	Switch On/Off	TA	Drying timer contacts
IC	Switch N.C. - 1/2 Load	TB	Low Temperature Thermostat
ID	Switch display	TC	Spider wheel earth
IE	Water Saving Device	TFL	Flange earth
IF	Switch - Spin Reduction	TG	Main earth
IP	Door switch	TH	Thermostat
IR	Line switch	TH1	1st temperature thermostat
IS	Water-stop	TH2	2nd temperature thermostat
L	Line or Lamp	TH3	3rd temperature thermostat
LB	Low Level	THF	Operating thermostat

LN	Normal Level	THR	Adjustable thermostat
LS	Pilot lamp	TM	Motor earth
M	Earth-symbol	TMB	Main cabinet earth
MC	Spin cycle motor	TMP	Motor thermal protector
MI	MOTOR WITH PULLEY	TMS	Thermostop
ML	Wash cycle motor	TP	Thermal protector
MO	Terminal Board	TPS	Drain pump earth
MP	Door dip-switch	TR	Heating element earth
MR	Thermal Lock	TS	Safety thermostat
MT	Timer motor	TT	Timer earthing connection
MV	Motor fan	TTH	Earthing Thermostat
MV -Ras	Dryer heating element	TV	Tank earth
Mzbn/MTA	zbn timer motor	ZBN	Timer

Electric schemes and links

Cod. 107141a



Legend

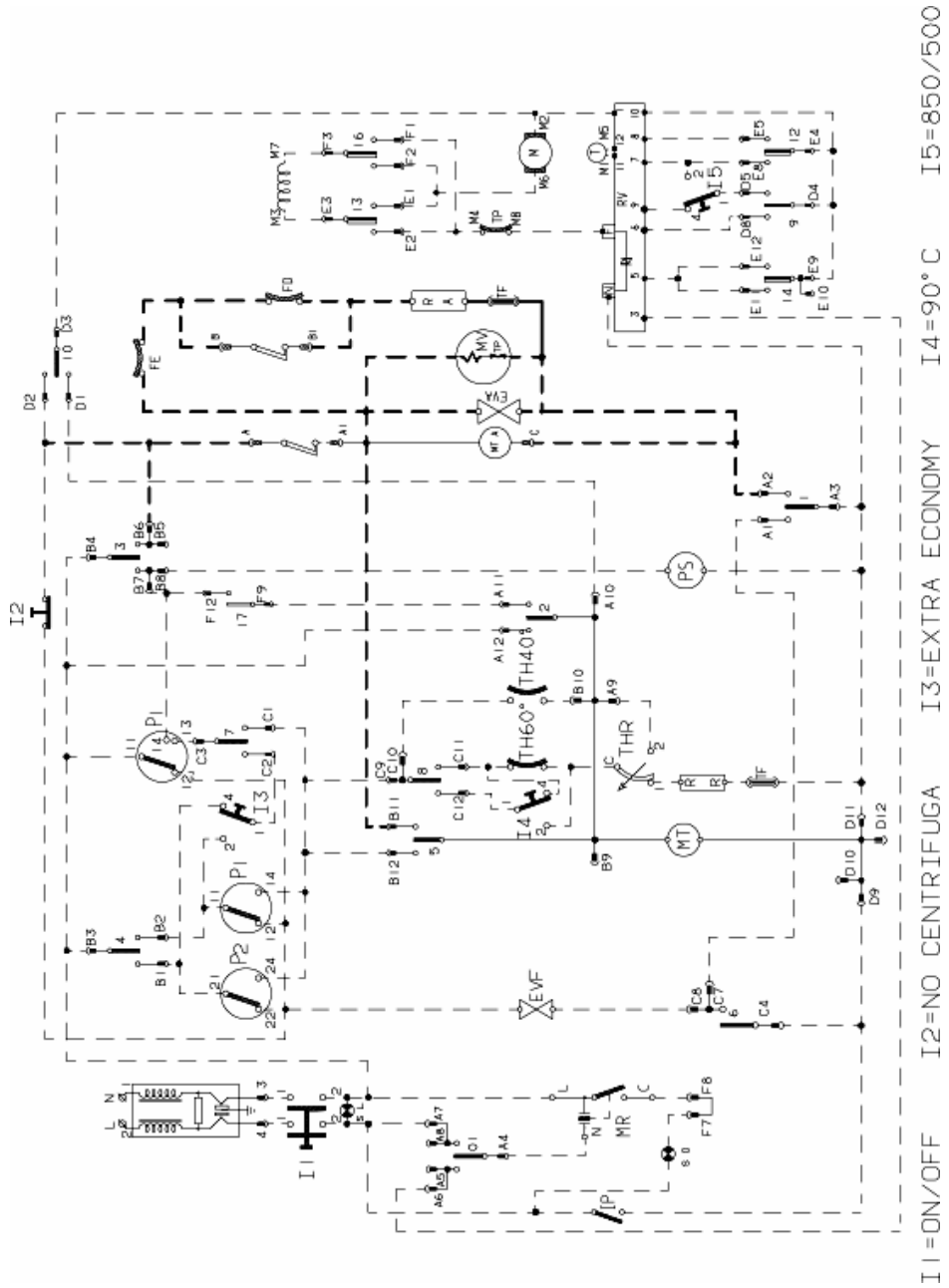
Legend: 107141a

B	Buzzer	N	Neutral or Terminal Board
BF	Terminal board contact, motor fan and dryer	NC	Spin cycle exclusion
BP	Buzzer	P	Pressure switch
C	Condensator	P1	1st level pressure cut-off switch
CA	Condensator	P2	2nd level pressure cut-off switch
DV	Switching device	PA	High speed potentiometer
EF/CL	Electro-Valve Cold Water / Bleach	PB	Low speed potentiometer
EF/L	Electro-Valve Cold Water / Wash	PL	Pure Wool
EF/P	Electro-Valve Cold Water / Prewash	PM	Motor Thermoprotector
ER	Exclude Heating Element	PR	Timer programmer
ET	Thermostat disactivation	PS	Drain pump
EV	Electrovalve	R	Heating element
EVA	Dryer electrovalve	RE	Relay
EVC	Hot water electrovalve	RR	Heating element
EVF	Elettrovalvola acqua fredda	RV	Speed regulator
EVL	Wash electrovalve	Ras/RA	Dryer heating element
EVP	Pre Wash electrovalve	S	LED
FA	Antijamming filter	SL	Line LED
FD	Delicate drying cycle thermostat	SO	Door LED
FE	Strong drying cycle thermostat	SR	Heating LED
FRT	Thermofusible Heating Element	ST	Temperature selector
I	Inverter	SV	Speed Selector for Spin
II...2...3..	Switches/switching devices	T	Timer contacts
IA	Switch On/Off	TA	Drying timer contacts
IC	Switch N.C. - 1/2 Load	TB	Low Temperature Thermostat
ID	Switch display	TC	Spider wheel earth
IE	Water Saving Device	TFL	Flange earth
IF	Switch - Spin Reduction	TG	Main earth
IP	Door switch	TH	Thermostat
IR	Line switch	TH1	1st temperature thermostat
IS	Water-stop	TH2	2nd temperature thermostat
L	Line or Lamp	TH3	3rd temperature thermostat
LB	Low Level	THF	Operating thermostat

LN	Normal Level	THR	Adjustable thermostat
LS	Pilot lamp	TM	Motor earth
M	Earth-symbol	TMB	Main cabinet earth
MC	Spin cycle motor	TMP	Motor thermal protector
MI	MOTOR WITH PULLEY	TMS	Thermostop
ML	Wash cycle motor	TP	Thermal protector
MO	Terminal Board	TPS	Drain pump earth
MP	Door dip-switch	TR	Heating element earth
MR	Thermal Lock	TS	Safety thermostat
MT	Timer motor	TT	Timer earthing connection
MV	Motor fan	TTH	Earthing Thermostat
MV -Ras	Dryer heating element	TV	Tank earth
Mzbn/MTA	zbn timer motor	ZBN	Timer

Electric schemes and links

Cod. 107148b



Legend

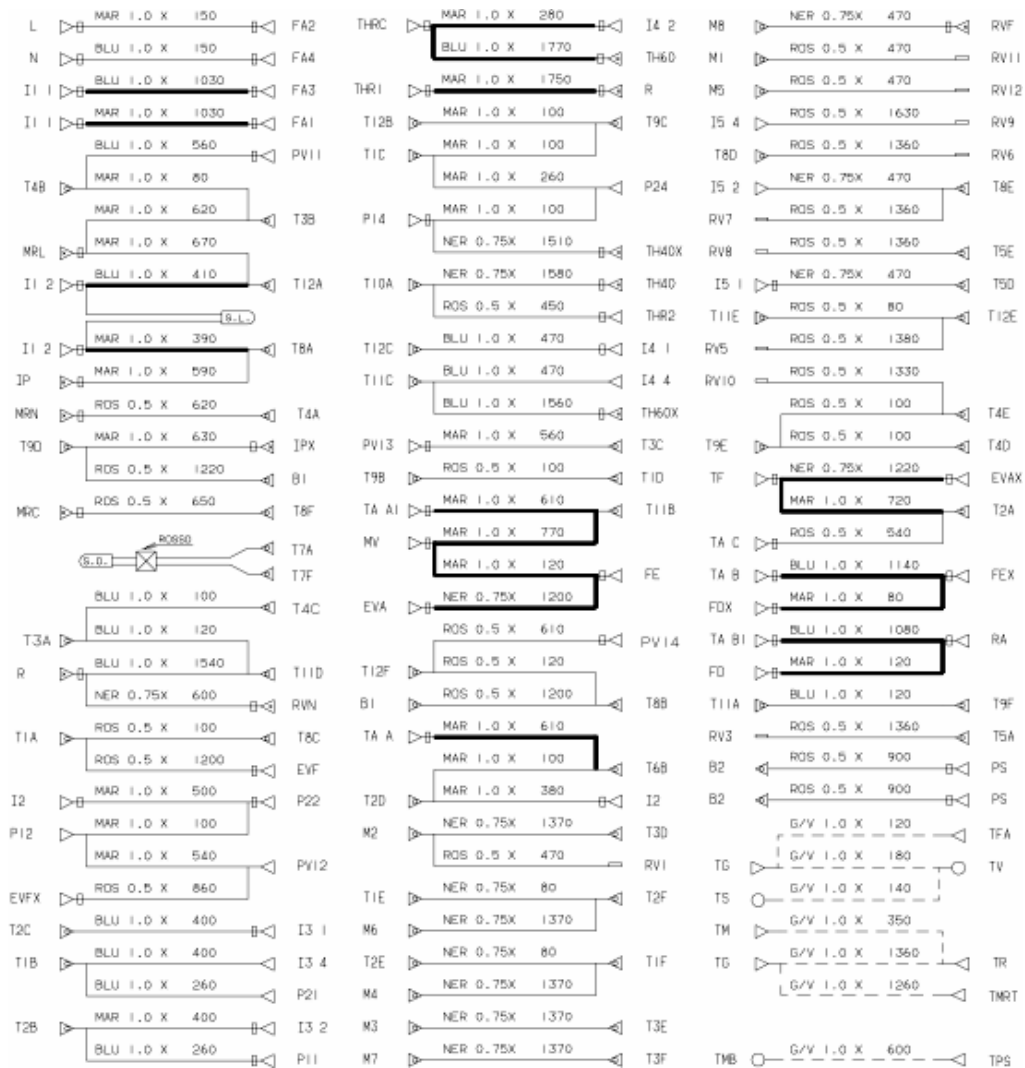
Legend: 107148b

B	Buzzer	N	Neutral or Terminal Board
BF	Terminal board contact, motor fan and dryer	NC	Spin cycle exclusion
BP	Buzzer	P	Pressure switch
C	Condensator	P1	1st level pressure cut-off switch
CA	Condensator	P2	2nd level pressure cut-off switch
DV	Switching device	PA	High speed potentiometer
EF/CL	Electro-Valve Cold Water / Bleach	PB	Low speed potentiometer
EF/L	Electro-Valve Cold Water / Wash	PL	Pure Wool
EF/P	Electro-Valve Cold Water / Prewash	PM	Motor Thermoprotector
ER	Exclude Heating Element	PR	Timer programmer
ET	Thermostat disactivation	PS	Drain pump
EV	Electrovalve	R	Heating element
EVA	Dryer electrovalve	RE	Relay
EVC	Hot water electrovalve	RR	Heating element
EVF	Elettrovalvola acqua fredda	RV	Speed regulator
EVL	Wash electrovalve	Ras/RA	Dryer heating element
EVP	Pre Wash electrovalve	S	LED
FA	Antijamming filter	SL	Line LED
FD	Delicate drying cycle thermostat	SO	Door LED
FE	Strong drying cycle thermostat	SR	Heating LED
FRT	Thermofusible Heating Element	ST	Temperature selector
I	Inverter	SV	Speed Selector for Spin
II...2...3..	Switches/switching devices	T	Timer contacts
IA	Switch On/Off	TA	Drying timer contacts
IC	Switch N.C. - 1/2 Load	TB	Low Temperature Thermostat
ID	Switch display	TC	Spider wheel earth
IE	Water Saving Device	TFL	Flange earth
IF	Switch - Spin Reduction	TG	Main earth
IP	Door switch	TH	Thermostat
IR	Line switch	TH1	1st temperature thermostat
IS	Water-stop	TH2	2nd temperature thermostat
L	Line or Lamp	TH3	3rd temperature thermostat
LB	Low Level	THF	Operating thermostat

LN	Normal Level	THR	Adjustable thermostat
LS	Pilot lamp	TM	Motor earth
M	Earth-symbol	TMB	Main cabinet earth
MC	Spin cycle motor	TMP	Motor thermal protector
MI	MOTOR WITH PULLEY	TMS	Thermostop
ML	Wash cycle motor	TP	Thermal protector
MO	Terminal Board	TPS	Drain pump earth
MP	Door dip-switch	TR	Heating element earth
MR	Thermal Lock	TS	Safety thermostat
MT	Timer motor	TT	Timer earthing connection
MV	Motor fan	TTH	Earthing Thermostat
MV -Ras	Dryer heating element	TV	Tank earth
Mzbn/MTA	zbn timer motor	ZBN	Timer

Electric schemes and links

Cod. 107148c



Legend

Legend: 107148c

B	Buzzer	N	Neutral or Terminal Board
BF	Terminal board contact, motor fan and dryer	NC	Spin cycle exclusion
BP	Buzzer	P	Pressure switch
C	Condensator	P1	1st level pressure cut-off switch
CA	Condensator	P2	2nd level pressure cut-off switch
DV	Switching device	PA	High speed potentiometer
EF/CL	Electro-Valve Cold Water / Bleach	PB	Low speed potentiometer
EF/L	Electro-Valve Cold Water / Wash	PL	Pure Wool
EF/P	Electro-Valve Cold Water / Prewash	PM	Motor Thermoprotector
ER	Exclude Heating Element	PR	Timer programmer
ET	Thermostat disactivation	PS	Drain pump
EV	Electrovalve	R	Heating element
EVA	Dryer electrovalve	RE	Relay
EVC	Hot water electrovalve	RR	Heating element
EVF	Elettrovalvola acqua fredda	RV	Speed regulator
EVL	Wash electrovalve	Ras/RA	Dryer heating element
EVP	Pre Wash electrovalve	S	LED
FA	Antijamming filter	SL	Line LED
FD	Delicate drying cycle thermostat	SO	Door LED
FE	Strong drying cycle thermostat	SR	Heating LED
FRT	Thermofusible Heating Element	ST	Temperature selector
I	Inverter	SV	Speed Selector for Spin
II...2...3..	Switches/switching devices	T	Timer contacts
IA	Switch On/Off	TA	Drying timer contacts
IC	Switch N.C. - 1/2 Load	TB	Low Temperature Thermostat
ID	Switch display	TC	Spider wheel earth
IE	Water Saving Device	TFL	Flange earth
IF	Switch - Spin Reduction	TG	Main earth
IP	Door switch	TH	Thermostat
IR	Line switch	TH1	1st temperature thermostat
IS	Water-stop	TH2	2nd temperature thermostat
L	Line or Lamp	TH3	3rd temperature thermostat
LB	Low Level	THF	Operating thermostat

LN	Normal Level	THR	Adjustable thermostat
LS	Pilot lamp	TM	Motor earth
M	Earth-symbol	TMB	Main cabinet earth
MC	Spin cycle motor	TMP	Motor thermal protector
MI	MOTOR WITH PULLEY	TMS	Thermostop
ML	Wash cycle motor	TP	Thermal protector
MO	Terminal Board	TPS	Drain pump earth
MP	Door dip-switch	TR	Heating element earth
MR	Thermal Lock	TS	Safety thermostat
MT	Timer motor	TT	Timer earthing connection
MV	Motor fan	TTH	Earthing Thermostat
MV -Ras	Dryer heating element	TV	Tank earth
Mzbn/MTA	zbn timer motor	ZBN	Timer